

CO-REC 14" SOFTBALL
RULES AND REGULATIONS
FALL 2016



**** NO DOGS ARE ALLOWED AT HARRER PARK ****

LEAGUE FORMAT

1. Standings will be kept over the entire regular season schedule at www.quickscores.com/mortongrove. League champion will be determined by best overall record.
2. At the conclusion of the regular season, there will be a postseason tournament. The amount of teams that make the tournament depends on the number of teams in the league.
3. A 12'-6' pitching arc will be instated. The arc will be enforced by the umpire and be in effect for both males and females.

SCHEDULING

1. The "Home Team" will be the team whose number appears SECOND on the schedule throughout the season.
2. Make-up games shall be conducted on Sundays or if possible on the same day of the week.
3. Questions regarding schedules, game locations and times can be answered by visiting www.quickscores.com/mortongrove Rainouts/field conditions can be answered by calling the **Morton Grove Park District 24 Hour Hotline number 847-965-7558 after 4:00 p.m. Ext #3**
4. All make-up games will be reported to team managers. It is the team manager's responsibility to inform their team members of such make-ups.
5. **There will be no changes in schedules after schedules are posted online.**

The Park District reserves the right to change or alter any rule or league schedule in order to improve the quality of the league. The Park District reserves the right to make any decisions necessary to complete the league/tournament in a timely manner. This is not limited to, but includes playing any day or night of the week, having games canceled or calling a game completed if ended early due to weather.

ROSTER/WAIVER FORMS

1. All teams must have a roster/waiver form on file before the season starts. Rosters must be complete with names, addresses and phone numbers of all participants. All players must fill out all roster information completely. **Players must be at least 18 years of age or older on the first date of play.**
2. Rosters will be limited to a maximum of (21) players.
3. **Rosters due at 1st game - changes may be made until the second week of the season.**
4. Players may play on (1) team per competitive league. In a league with “A” and “B” levels, a participant may play in (2) levels. Any player found participating on more than 1) team per league, will suspend his or her opportunity to participate and the team participated for, will forfeit all games which used the player. To prevent this shortcoming, all players are urged to carry a **picture driver’s license** to all games, and present it upon request.
5. Protest of player eligibility can be made or appealed any time during the game. The field supervisor will check the team roster and at this time, the player must produce proper identification (driver’s licenses or comparable identification is acceptable). If player is declared ineligible the team will forfeit the game.

STANDINGS

1. Standings will be posted at www.quickscores.com/mortongrove

Tie Breaker for League Standings

- Winning Percentage
- Head to Head Competition (between two teams)
- Average Run Differential (10 Max Factor)
- Forfeit
- Coin Flip

- * **With the above-mentioned rules, it is imperative that all scores are accurate on the official scorecards submitted. Thus, both team manager’s signature, in addition to the umpire’s signature must appear on the scorecard.**

LEAGUE AWARDS

1. A monetary award will be presented to the following teams, payable to the TEAM CAPTAIN stated on the official application form.

Refunds for forfeit fees, League/Tournament Champion Payout, sponsorship reimbursement, will be mailed a maximum of 4 to 6 weeks (30 to 45 days) after the end of the program.
--

PLAYING RULES

The official rules of softball, as adopted by the Amateur Softball Association of America (A.S.A.) will govern all league play except those rules indicated.

1. The "Home Team" will keep the game ball after the game.
2. Official scorecards will be provided by the Morton Grove Park District. **BOTH TEAM MANAGER'S AND UMPIRE'S SIGNATURE MUST APPEAR ON THE SCORECARD.**
3. The official scorecard may be submitted to the Softball Supervisor or placed on the scorecard clipboard where it will be collected by the Softball Supervisor. If an official scorecard is unavailable to submit, the scoresheet from the winning team's scorebook may substitute.
4. Games are limited to **one hour**. A regulation game shall consist of 7 innings with the exception of the slaughter rule or a game called by the umpire. **In the event of rain, darkness or other circumstances declared by the umpire, a game shall be considered official after (4 1/2) innings if the "Home Team" is leading.** Should the game not go 4 1/2 innings, the game will be re-played on another date picking up the game at the point where the game was called. **No new inning will start after 55 minutes of play, exception to this rule would be a tie.**

***Exception –Playoff games have a time limit of 1hr25min**

In the rare event of a tie game (after 60 minutes of play or past 7 innings), the game will be played until a winner is determined:

The 8th inning: 2-2 Count goes into effect

The 9th inning: 3-2 count goes into effect and the last batter to make an out in the previous inning starts at second base

***Playoff games that go into extra innings will stay with a 1-1 count and played with normal base running rules**

5. All teams must begin and/or end a game with a minimum of (8) players, if not, a forfeit will occur (teams must have 4 women to start a game). If a team begins a game with (8) players, (4 Men/4 Women) the (9th & 10th) player may enter the game as soon as he/she arrives and must bat in the (9th & 10th) batter position, respectively. If a team plays with (9) players (5) must be females.
6. **Slaughter Rule: Any team leading by 12 runs at the end of 5 innings or 10 runs at the end of 6 innings will be declared the winner.**

***Playoff slaughter rule: No rule after 5 innings, 15 runs after 6 innings.**

7. Game time will be forfeit time for all games. **The score of a forfeited game will be 12-0.** Eight players must be present by game time. If neither team has (8) players present, both will forfeit the Game (Loss). If (8) players are present, the game must begin.

Teams are permitted two forfeits throughout the season, incurring a \$50.00 fine for the first forfeit. **If any team forfeits a second time, that team may face an additional forfeit fee and be removed and or expelled from the league, forfeiting all league fees paid.** The league schedule may be re-worked at this point and captains will be notified of the new schedule.

If a team walks off the field during a game that is not called final by the umpire, that team will forfeit the game and is subject to removal from the league forfeiting all league fees paid.

8. Each team shall have equal possession of the infield prior to the start of the game, provided the game begins at the scheduled time.
9. No metal spikes or football cleats are allowed. Only rubber cleats are acceptable. Failure in complying with this ruling shall result in an "ejection of the game."
10. There will be no drawn batter's box. The batter will be called out if he steps across the side of home plate when the pitched ball is hit foul or fair. The ball becomes dead and base runners may not advance.

11. All bats must say "Official Softball" and comply with A.S.A. standards. (Bats longer than 34" in length will not be allowed). This ruling **no longer** requires an appeal. In the event that an "illegal bat" is used, the batter is declared out, all base runners return to the base occupied at the time of the pitch, and play is continued with the next batter in the lineup. The "illegal bat" will not be allowed use for the remainder of the game. Any continued offenses of using an "illegal bat by the original batter or other team members, will result in an "ejection of the game". The most current A.S.A. "Banned Bat" list will dictate whether a bat is legal or illegal at the time of play.
12. The "Strike Zone" is the area over home plate that is below the batter's shoulders and above the knees when the batter assumes his natural batting stance. The "wells" will be considered strikes.
13. After (2) strikes, any batter who fouls off (1) pitch will be declared out, the ball will come dead. The base runners may not advance, unless the foul ball is caught on the fly.
14. A batted **FAIR BALL**, which strikes the overhanging branches of any tree will be a dead ball, and no count will be assessed to the batter. Runners may not advance. A foul ball that strikes the branches will be considered a strike.
15. The pitcher's pivot must be in contact with the pitching plate until the release of the ball. It is not mandatory to step, but if a step is to be taken, it must be simultaneous with the release of the ball and it may be taken forwards or backwards. **Pitching plate closest to Home Plate (38 ft.) will be used.**
16. **The count of the batter will start with 1 ball and 1 strike.** The pitched ball must be delivered at a slow speed. **The pitch shall have a maximum 12' height restriction and must be pitched higher than 6 feet, thus enforcing the 12'-6' arc limit.**
17. After taking the pitching position, with his/her foot in contact with the pitcher's plate, the pitcher cannot throw to a base. Violations of this rule will result in a ball assessed to the batter. Pitcher may not fake a pitch or leave the mound when pitching.
18. Base runners may not lead off at anytime. They may not leave the base until the pitched ball has crossed the plate. If a runner leaves early no pitch is declared to the batter and the runner is out.
19. Pitchers are allowed three (3) warm up pitches for the (1st) inning of each game and/or if a new pitcher enters the game two (2) warm-up pitches are allowed each inning thereafter. For every additional warm up pitch thrown a ball will be assessed to the batter.
20. A courtesy runner will be allowed by mutual agreement of both captains. The courtesy runner will be the player who made the last out. Female runners for females and male runner for males.
21. On an overthrow, the ball remains in play if it hits the fence behind (1st) and (3rd) base, the fence behind home plate and/or the ball stays within the imaginary line extending from the ends of the fence parallel to the foul lines. Base runners may advance at their own risk. **If the overthrow goes beyond the imaginary line, the ball becomes dead, and the base runner is awarded (2) bases from the runner's position at the time of the fielders release of the throw.**
22. If a base runner deliberately and with great force, crashes into a fielder while attempting to reach a base, the base runner will be declared out for failing to avoid contact. If the act is determined to be flagrant, the base runner may be ejected from the game.

23. Substitution. By general rule, all players must be substituted for when they are taken out of a game. Exceptions to this rule are as follows:

(a) The possibility of a player(s) having to leave a game before its completion, and the team has no available substitute(s), thus reducing the team to (8) or (9) players, must be discussed and approved by both team managers before the game **NOTE:** This ruling prevents a team from gambling on reducing the team to (8) or (9) players and pulling a weak hitter in a crucial situation out of the game. The player's turn at bat, and all subsequent turns at bat will be considered an out.

24. Teams will be allowed free substitution in the field. The batting order may be comprised of all players present as long as it alternates male/female. Any of the starting players may be withdrawn and re-entered once, provided the players occupy the same positions at bat whenever in the lineup.

25. Teams must alternate men and women in the batting order throughout the game.

26. If a male player is walked, he has the option to bat again or walk; he must take his base on the second walk in the same at bat. The female player, next in the batting order, has the option of batting or taking an intentional walk (when the male walks twice in the same at bat).

27. Players must play the following designated positions:

Female

1st Base

Short center

3rd Base

Center Field

Male

2nd Base

Shortstop

Left Field

Right Field

*** Only one male can play in the pitcher-catcher combination.**

28. Women ONLY will be allowed to use a baseball glove if they desire.

29. Smoking is not allowed on the playing field while games are in progress. This includes the (1st) and 3rd) base coaching areas. Failure to comply with this ruling, will result in "an ejection from the game". Players may confine their smoking activities to the bleachers, benches, or aside from the field.

30. **ALCOHOLIC BEVERAGES ARE NOT ALLOWED ON MORTON GROVE PARK DISTRICT PROPERTY**. Participants showing evidence of being under the influence of alcohol, or any other illegal drugs will be subject to immediate ejection from the game and face up to a (1) or more game suspension. The team involved may face up to a (1) or more game suspension, and expulsion from the league if further violation is committed thereafter.

31. Any verbal or physical abuse of an umpire or Park District Representative or player prior to, during, or after a softball game may result in (1) or more game suspension of the player. In the event of any subsequent infraction, the team will be placed on probation, and may face a one (1) or more game suspension and team ejection from the current league and the league in the following year. Any decision to suspend or terminate privileges to participants will be made by a committee consisting of the umpire, umpire assignment chairman and the Recreation Supervisor.

MANAGERS ARE RESPONSIBLE FOR CONDUCT OF ALL PLAYERS AND SPECTATORS OF THEIR TEAM.

32. DOUBLE FIRST BASE RULES

- A. A batted ball hitting the white portion is declared fair and a batted ball hitting the colored portion is declared foul.
- B. Whenever a play is being made on the batter-runner, the defense must use the white portion and the batter-runner the colored portion. On extra base hits or balls hit to the outfield when there is no play being made at the double base, the batter runner may touch the white or colored portion. Should the batter runner return, the runner must return to the white portion.

NOTE: The batter-runner is out when there is a play being made at first base and the batter-runner touches only the white portion, providing the defense appeals prior to the batter-runner returning to first base.

- C. When tagging up on a fly ball, the white portion must be used.
- D. On any force out attempt from the foul side of first base the defense and the batter-runner may use either the white or colored portion of the base.
- E. On an errant throw pulling the defense off of the white portion of the base into foul ground the batter-runner may use either the white or colored portion.
- F. On plays at 1st base when the batter-runner touches only the white portion and collides with the fielder about to catch a thrown ball while on the white of the base, Interference is called. The ball is declared dead, the batter-runner is out and runners must return to the last base occupied at the time of interference.

33. If the heat index is in excess of 115 degrees at game time, games will be cancelled until the heat index is less than 115 degrees.

34.:

- A batted ball that flies or bounces unassisted into the trees/shrubbery, is a live ball and the fielder can play the ball at their own risk. The fielder has the option if they do not want to go into the trees to put both of their hands up in the air, and in that case an automatic homerun is awarded.
- If a fielder purposely assists the ball into the out-of-play area, a home run shall be awarded to the batter.

Injuries

The Morton Grove Park District will not be held responsible for any injuries that occur during the softball season. The Park District does not provide insurance and will not be responsible for seeking or paying insurance. Please notify the Athletic Supervisor or our field staff of any injuries.

PROTESTS

- A. All protests of games participated must be on an infraction(s) of the rules and not a matter of judgment. Protest will be considered on this basis only.
- B. The following procedures are to be followed:

(1) The official(s) and the opposing team must be informed of the intent to protest immediately at the time of the rule(s) infraction(s). This action must be done before play is resumed. It is recommended the score sheet be marked and initialed by the umpire to be submitted with the written protest.

(2) A protest **must be in writing** and **submitted to the Athletic Department by 5:00 p.m. the next day following the completion of the disputed game.** The only exception being a game played on a Friday or Saturday, or before a holiday. In this case, the written statement must be submitted by 5:00 p.m. the first day following the protested game that the Park District Administration offices are open.

(3) All protests must be accompanied by a \$25.00 fee. If the protest is upheld, the \$25.00 will be returned.

C. The Protest Committee

A Protest Committee will decide all protests. The Protest Committee will be comprised of the Athletic Supervisor, Recreation Manager, Softball Supervisor, and the Official Softball Assignment Chairman.

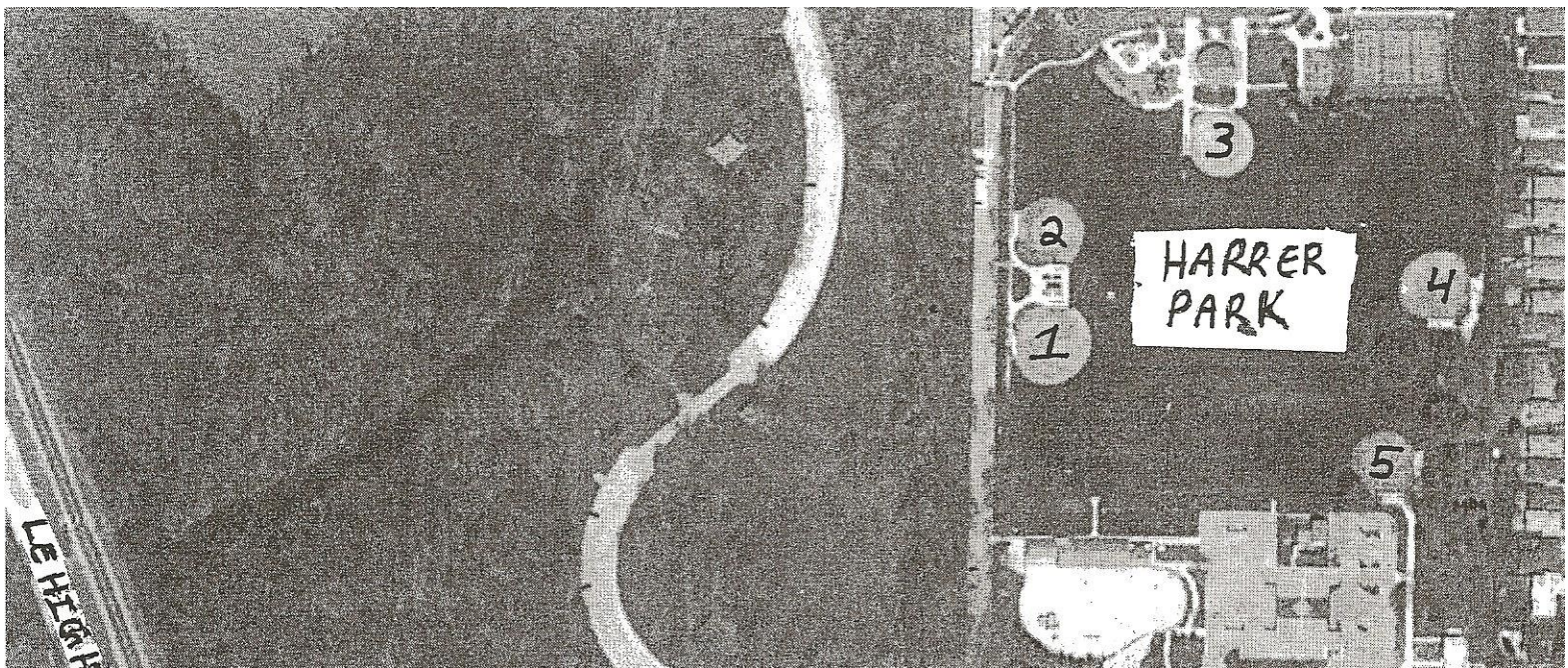
FIELD RENTAL PERMITS

1. Field usage permit reservations may be made at the Prairie View Community Center Administration Office, Monday through Friday from 9:00 a.m. to 5:00 p.m. August 13th. Reservations can be made in person or by calling 847-965-1200. Permits may be picked up by previous arrangements after 5:00 p.m. at the Customer Service Desk.
2. Permits are issued for (1 1/2) hours at no fee charge for league teams. Teams are allowed (1) permit per week, on a Monday through Sunday schedule. If the use of lights is requested, teams will be charged a \$20.00 fee. **Field rental fees are subject to change at any time.**

GAME SITES

HARRER PARK
6250 W. DEMPSTER
MORTON GROVE, IL 60053

Last updated: 5/3/16



Zero Tolerance Policy

The Morton Grove Park District will suspend or terminate league privileges to any individual(s) involved in the following activities:

**FIGHTING
ABUSIVE LANGUAGE
DEFIANCE OF AUTHORITY
DISRUPTIVE BEHAVIOR
GENERAL HARASSMENT
DESTRUCTION OF PROPERTY
DRUG & ALCOHOL USAGE
MOB ACTION**

Please respect your league, its officials and those who participate in it.

**Thank you
Morton Grove Park District**